






Thinking Outside the Box

Print ads for Verizon and Sears and television ads for Macy's and Old Navy are doing it...and so can you. A mosaic is a contemporary and clever design approach for a cover, title page, division spread or special feature layout. To make a magnificent mosaic, just use InDesign's Step and Repeat and Compound Paths features and think outside the box.

STEP 1: Using the Rectangle Frame tool , draw a single rectangle. In the example, the rectangle is 8p6 x 8p6 picas. To make a rectangle a specific size, select the rectangle frame with the Selection tool  and enter the width and height in the Control palette.

STEP 2: Select the rectangle frame with the Selection tool  and open the Stroke palette. Apply a 1 pt. stroke weight. If the stroke is not Black, open the Swatches palette and select the Black swatch for the stroke. To check that the stroke weight and color are correct, click on the Preview button  in the Tool palette.


STEP 3: Instead of manually copying, pasting and positioning a couple dozen identical frames, select the rectangular frame with the Selection tool  and go to Edit > Step and Repeat. Enter into the Step and Repeat dialog box:

Repeat Count: 4

Horizontal Offset: 9p6 (the width of the rectangular frame plus one additional pica for internal spacing)

Vertical Offset: 0

There should now be a total of five identical rectangular frames with one pica between each.



STEP 4: Use the Selection tool  and while holding the Shift key, click on all five of the rectangular frames to select them. Again go to Edit > Step and Repeat. Enter into the Step and Repeat dialog box:

Repeat Count: 5


Horizontal Offset: 0

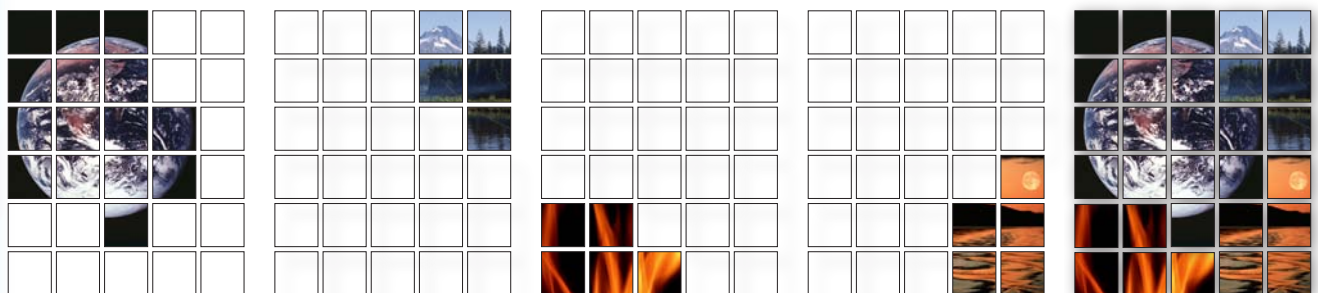
Vertical Offset: 9p6 (the height of the rectangular frame plus one additional pica for internal spacing)

You should now have a total of 30 identical rectangular frames with one pica between each.

STEP 5: To insert multiple images, use the Selection tool  and select several of the frames. Go to Object > Compound Paths > Make. The individual frames will now act as a single frame. Use the File > Place command or Herff Jones Image In to place the image. Repeat until all frames are filled with images. To reposition an image within the compound path, click on the image with the Direction Selection tool .

In the example, 15 frames were selected for a compound path and an Earth image was placed. Next, five more frames in the upper right corner were selected for a compound path and a Mountain image was placed. Next, five frames in the lower left corner were selected for a compound path and a Fire image was placed. Finally, five frames in the lower right corner were selected for a compound path and a Sunset image was placed.

STEP 6: For a final touch, select all the rectangular frames with the Selection tool  and go to Object > Drop Shadow. Turn on the Drop Shadow function by clicking the check boxes next to Drop Shadow and Preview. Change the Opacity to 50%, the X Offset to 0p5 and the Y Offset to 0p5.



Compound Path A

Compound Path B

Compound Path C

Compound Path D

Completed Mosaic

